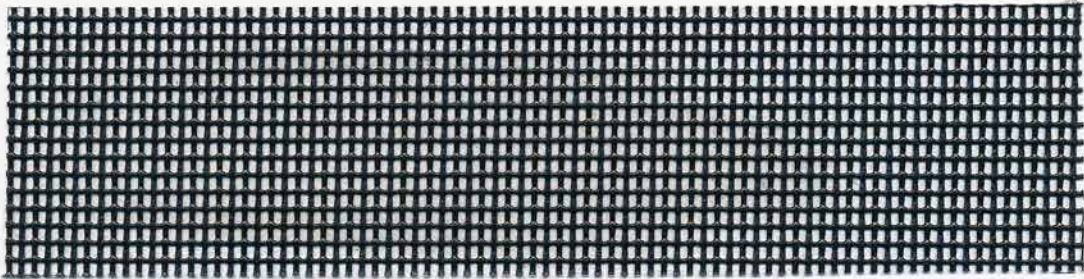


POLYMAR® scrim

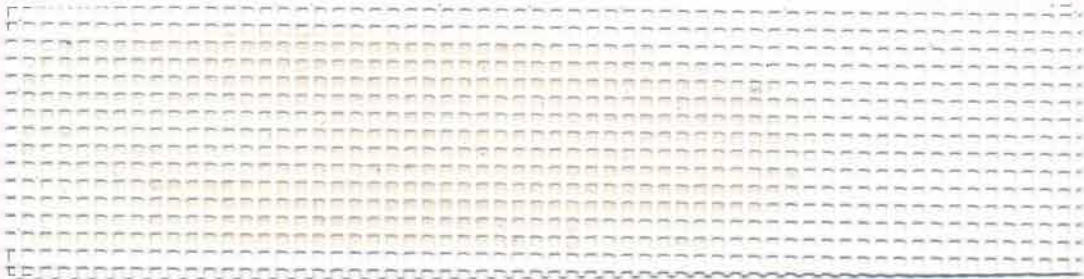
POLYMAR® scrim 7915 FR type scrim 7917 available, colour 905 black / FR-Variante scrim 7917 verfügbar, Farbe 905 schwarz



Widths and colours available:

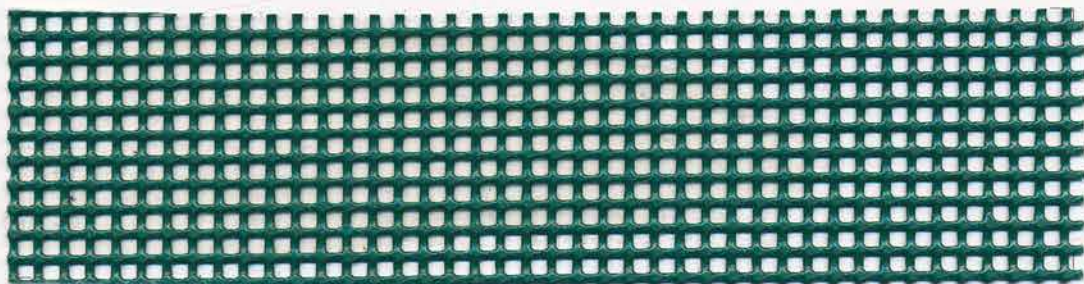
250 cm	370cm
907	
543	370
586	
682	682
691	691
763	
905	905

POLYMAR® scrim 7916



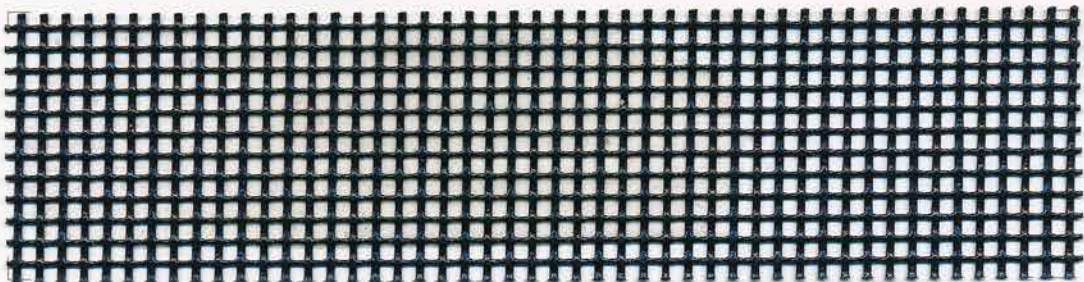
250 cm	370cm
907	
682	682
905	905

POLYMAR® scrim 7914



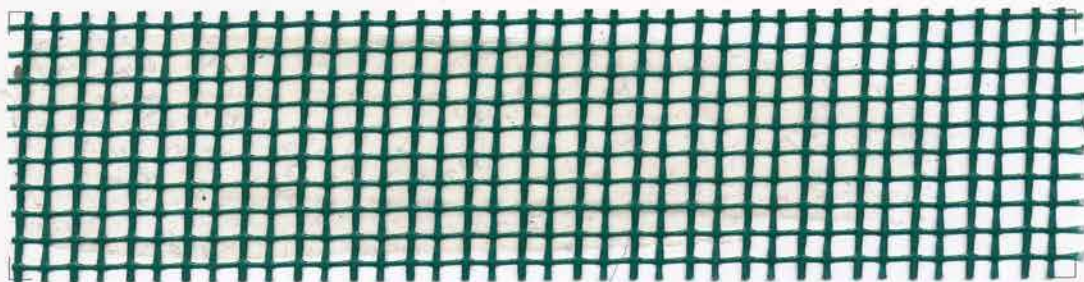
302 cm
682

POLYMAR® scrim 7912



234 cm
905

POLYMAR® scrim 7920



250 cm
682



907 weiß 370 karminrot 586 lagune 543 königsblau 682 russischgrün 691 bronzegrün 763 alugrau 905 schwarz

Other colours upon request, program changes reserved

POLYMAR[®] scrim

POLYMAR [®] scrim	7914	7912	7915	7916	7920
Gewicht weight poids	450 g/m ²	300 g/m ²	295 g/m ²	265 g/m ²	180 g/m ²
Offene Fläche openess surface ouverte	40 % LB 3.27	45 % LB 3.27	35 % LB 3.27	45 % LB 3.27	60 % LB 3.27
Reißkraft (N/50mm) tensile strength résistance rupture	3000/2300 DIN 53354	2000/2000 DIN 53354	1900/2000 DIN 53354	1900/1700 DIN 53354	1200/1100 DIN 53354
Weiterreißfestigkeit tear strength résistance déchirur	400/290 N DIN 53361	400/400 N DIN 53361	380/400 DIN 53361	330/380 N DIN 53361	300/250 DIN 53361
Geschlossene Fläche (Blockage) closed surface fermée	60 %	55 %	65 %	55 %	40 %
Luftdurchlässigkeit (l/m ² *sec) air permeability perméabilité à l'air	6920 DIN EN ISO 9237	7780 DIN EN ISO 9237	7520 DIN EN ISO 9237	9030 DIN EN ISO 9237	12100 DIN EN ISO 9237

Bei den angegebenen technischen Daten handelt es sich um Durchschnittswerte. Geringfügige Farbschwankungen vorbehalten; RAL-Farben in Anlehnung. Stets Gültigkeit der FR-Zulassung prüfen. Weitere Varianten auf Anfrage, Programmänderungen vorbehalten.

All technical data stated are based on laboratory tests at average results and are provided as a source of information and do not constitute a warranty. Applications suggested here do not release customer from testing material for its intended application. Colours displayed are representative of RAL color range. Always check the validity of fire certificate. Other versions upon request, program changes reserved.

Les données techniques indiquées sont des valeurs moyennes. Sous réserve de légers changements de coloris. Coloris approchants RAL. Veuillez toujours vérifier la validité des certificats anti-feu. Sous réserve de modifications de la gamme.

POLYMAR[®] ist recycelbar. POLYMAR[®] is recyclable. POLYMAR[®] est recyclable.

DIN EN ISO 9001:2000

All components are compliant to REACH – Registration, Evaluation and Authorisation of Chemicals



Quelle/Source: vd Gruiter, Andijk



Our commitment to
environmental responsibility
and sustainability



Mehler Texnologies GmbH

Rheinstrasse 11 · D-41836 Hückelhoven

Edelzeller Strasse 44 · D-36043 Fulda

Tel. +49 (0) 2433 459 0 · Fax +49 (0) 2433 459 151

info@mehler-texnologies.com · www.mehler-texnologies.com